



## Westlake 25



### Address

407 Yarrabee Park

### Lot Width

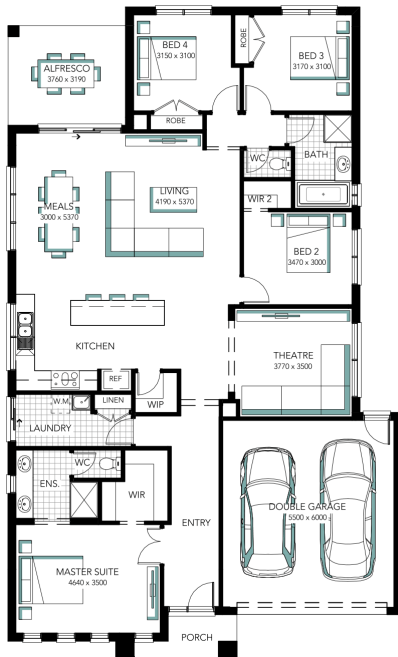
15.00

### Lot size

819.00 m<sup>2</sup>

### House size

233.88 m<sup>2</sup>



### Your Inclusions

- Enjoy the luxury of Essastone to your kitchen benchtops
- Beautiful Beaumont Tiles to your wet and dry area tiling
- Your home will stay cosy and warm with ducted gas heating and wall mounted control.
- Comfortable carpets and underlay to your bedrooms and lounge
- Seamless transition into your showers with tiled shower bases.
- 900mm stainless steel freestanding cooker and canopy rangehood for the Chef in the family.

### Package Enquiries

Call us on 1300 781 816